



SPECIFICATION

Shenzhen DreamLNK Technology Co., Ltd. 深圳市骏晔科技有限公司

WiFi 2400-2500MHz Copper Tube Antenna

Product Specification

Client Name		Frequency Band	2400~2500Mhz
Wire Name		Version	A1
Customer's Part Number		DreamLNK's Part Number	DL-T24 / DL-T24S
RF Designer	James Wang	RF Manager	Knight Ai
Structural Designer		Structural Design Manager	
Technical Director		Date	2018-08-12

Client confirmation:

Whether the product meets your requirements? OK NG

Contents

Cover	1
Contents	2
1. Photos	3
2. Parameters	3
3. Matching Circuits.....	4
4. Structure diagram	5-6
5. S11 Data	7
6. Contact us	7

1. Photos



DL-T24

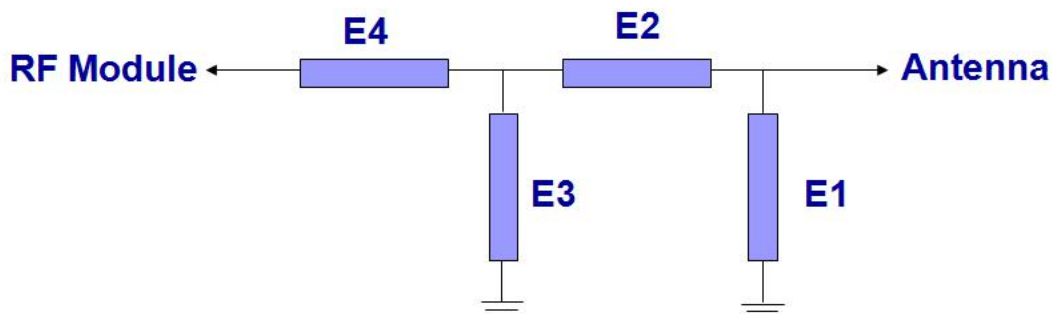


DL-T24S

2. Parameters

Frequency	WIFI(2.4~2.5GHz)
Impedance	50 Ohm Nominal
V.S.W.R	1.92:1 Max
Return Loss	-10dB Max
Radiation	Omni-directional
Gain(Peak)	2.0dBi
Polarization	Linear, Vertical
Admitted Power	1W
Connector	I-PEX I
Physical Properties	
Antenna Material	The brass
Cable Type	O.D.1.13mm
Operating Temp.	-10~+65℃
Storage Temp.	-10~+70℃
Cable Color	Gray

3. Matching Circuits & Design Guidance



WIFI Matching Circuits

Element	Value	Vender
E1(0402)		
E2(0402)	0Ω	
E3(0402)		
E4(0402)	0Ω	

Original matching circuit without modification

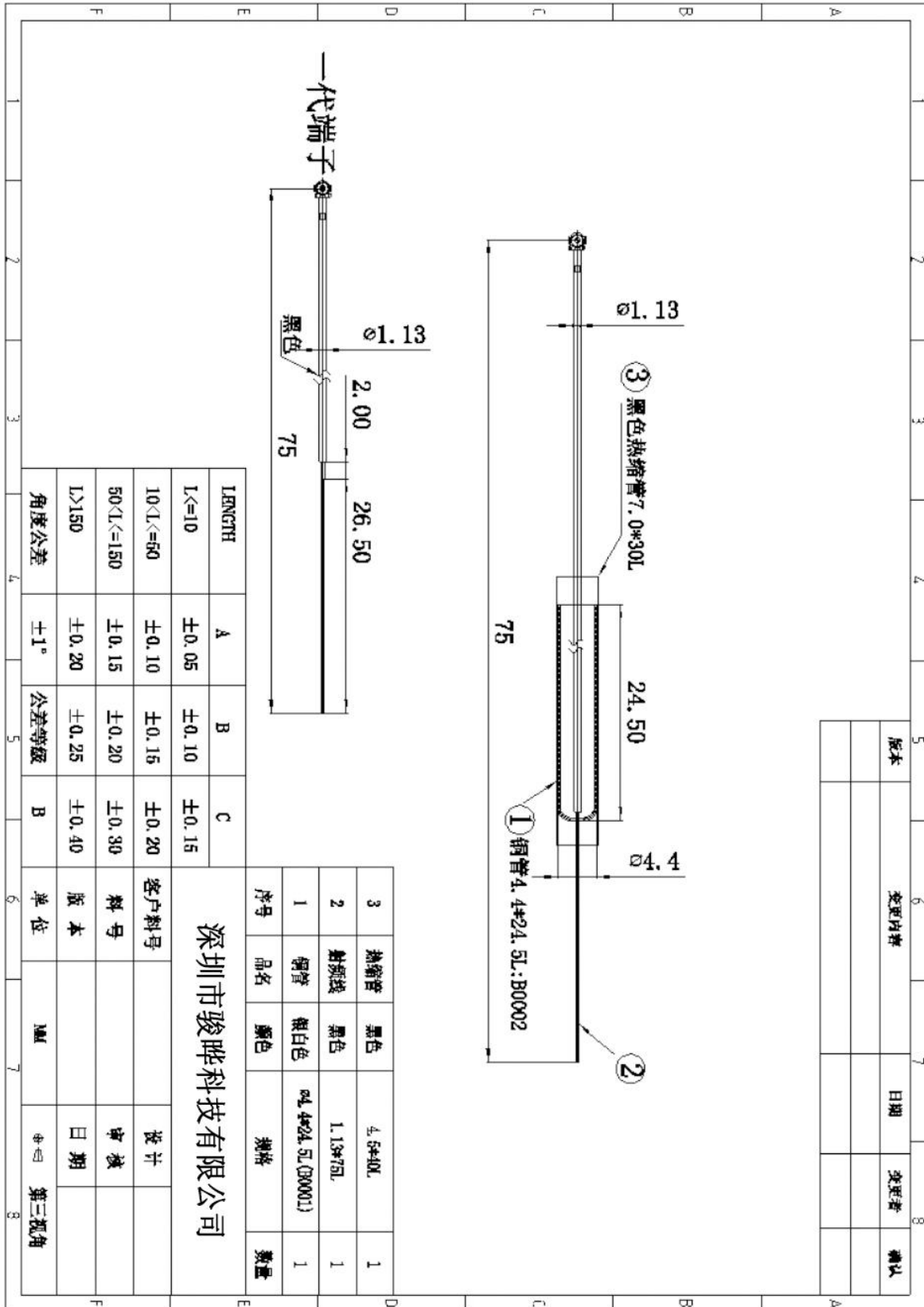
Note: The antenna design process needs to combine the product shape and structure, the position of the RF module signal input and output interface, and the position of the interference source inside the product to determine the position, angle, distance from the floor, and height from the PCB substrate.

Please reserve a π -type network to match the antenna. When debugging the antenna, be sure to provide a complete product shell and internal PCBA function board, calculate the external interference source and parasitic capacitance into the matching, so that the antenna can achieve the best performance indicators and work efficiency.

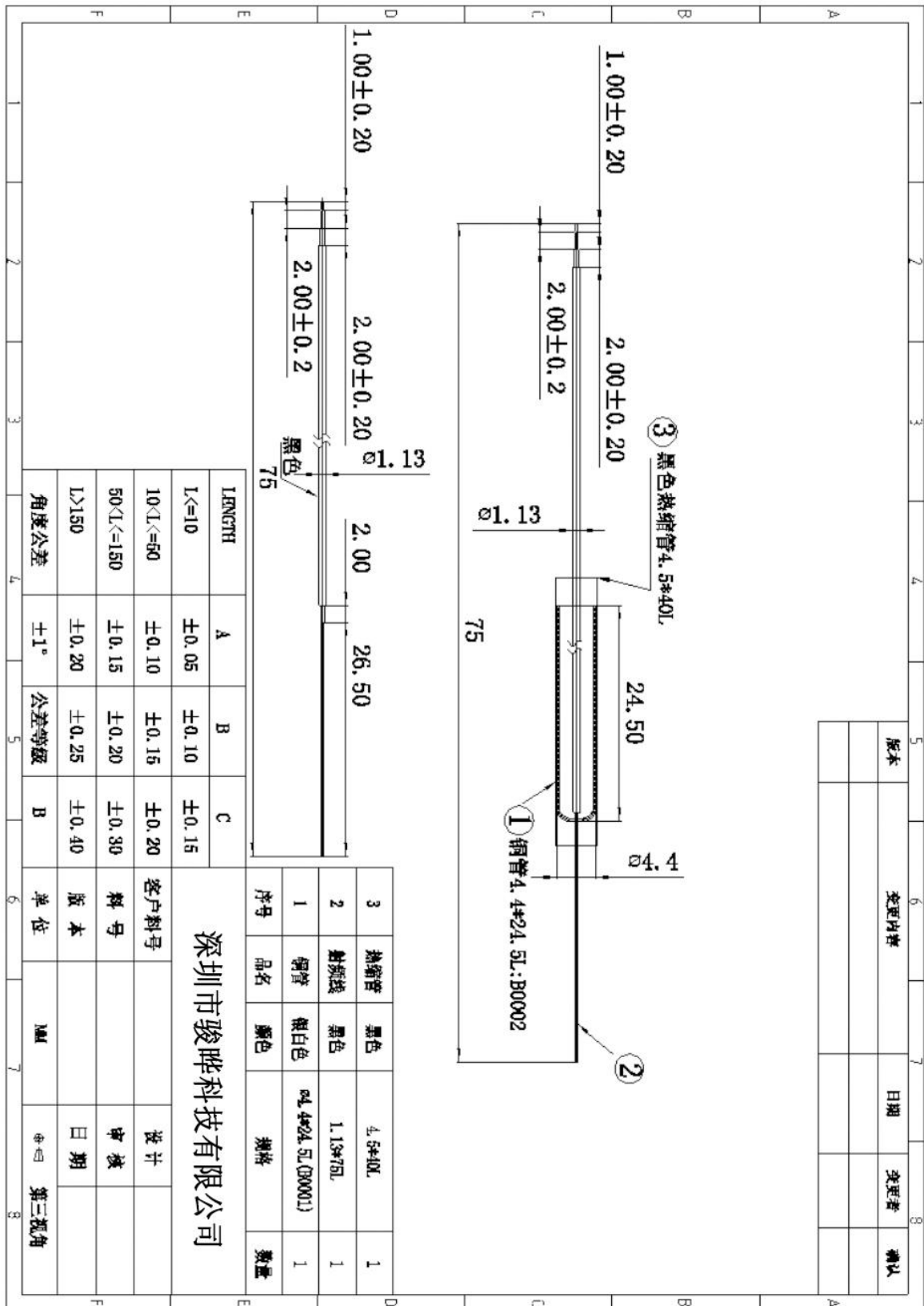
The PCB trace of the matching network refers to the 0.5mm line width, and the grounding on both sides of the network refers to the 0.35mm spacing to maintain good impedance characteristics.

If you have any questions, please send PCB documents to this e-mail support@dreamlnk.com

4. Structure diagram

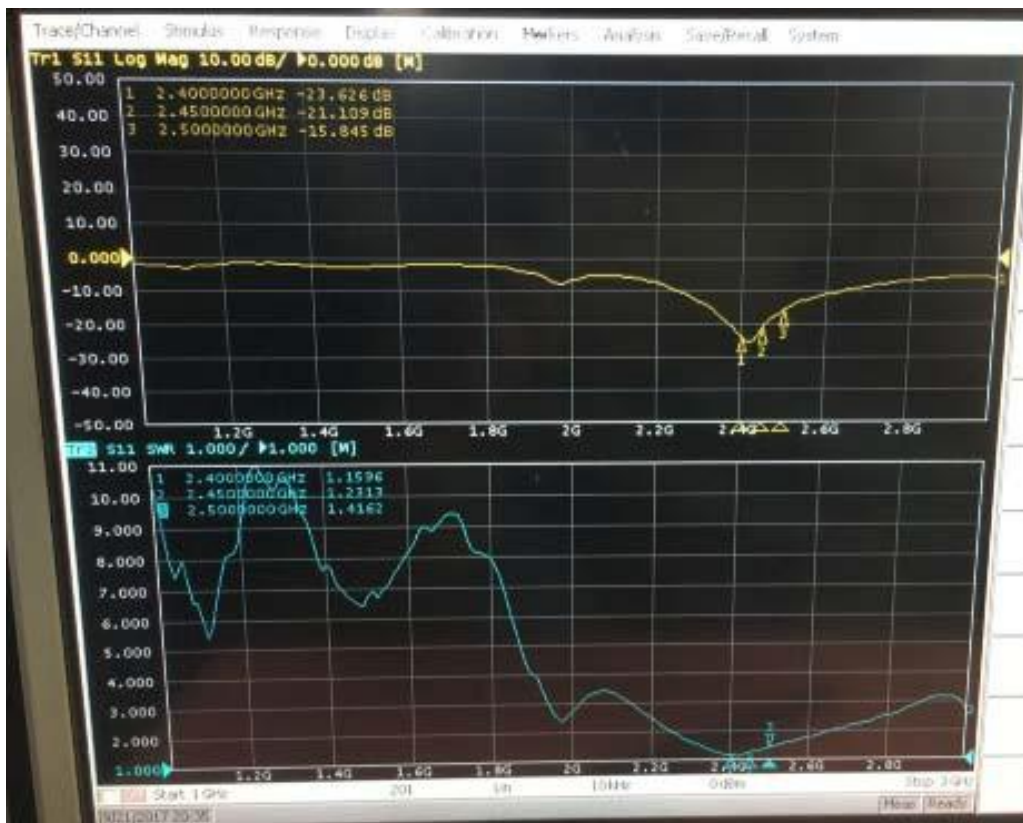


The information provided by us should be kept strictly confidential, and it is not allowed to disclose to anyone else or other companies, without prior written consent



The information provided by us should be kept strictly confidential, and it is not allowed to disclose to anyone else or other companies, without prior written consent

5. S11 DATA



6. Contact us

Shenzhen DreamLnk Technology Co., Ltd

★ Data collection, Smart home, Internet of Things applications, Wireless remote control technology, Remote active RFID, Antennas ★

Office Add.: Room 603, Unit C, Zone A, Huameiju Business Center, Xinhu Rd., Bao'an District, Shenzhen, Guangdong Province, China

Factory Add.: 5th Floor, Building B, Huazhi Innovation Valley, No. 7 Yuhua Street, 138 Industrial Zone, Tangxia Town, Dongguan, Guangdong Province, China

TEL.: +86-755-29369047

FAX: +86-755-27844601

Mobile: +86 13760215716

Wechat: wsj_james

E-mail: james@dreamlnk.com

Web: www.iot-rf.com